



# **What's New MY18 E-Class Coupe (C238)**

**MBC Product Management  
Date of Revision: February 7, 2017**

# Legal

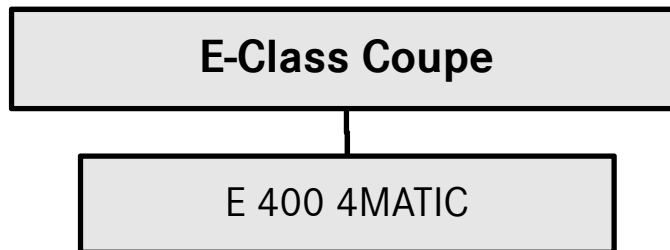
All illustrations and specifications contained in this guide are based on the latest product information available at the time of publication and is intended for internal use only. Text and images contained herein are all subject to copyright and other intellectual property protection. This guide may not be distributed, modified, transmitted, re-posted or used for public or commercial purposes without the written permission of Mercedes-Benz Canada Inc. This guide may also contain materials that are subject to the copyright rights of their providers. Mercedes-Benz Canada Inc. reserves the right to make changes at any time, without notice, to colours, materials, equipment, specifications and models. Any variations in colours shown are due to variation between monitors and printers. Illustrations may include test situations. Some vehicles may be shown with non-Canadian equipment. Some vehicles are shown with optional equipment. All other registered trademarks or trademarks are property of their respective owners.

# What's New for MY 18

## Introduction

For MY18, the E-Class Coupe undergoes a complete transformation. With its all-new exterior design, the 2018 E-Class Coupe is the most beautiful way to drive an E-Class. A distinct coupe interior, with unique air vents and seats, differs significantly from the E-Class Sedan, while maintaining all of the tasteful appointments and cutting edge technology. Further, all four seats now have more space for passenger comfort when compared with the outgoing model.

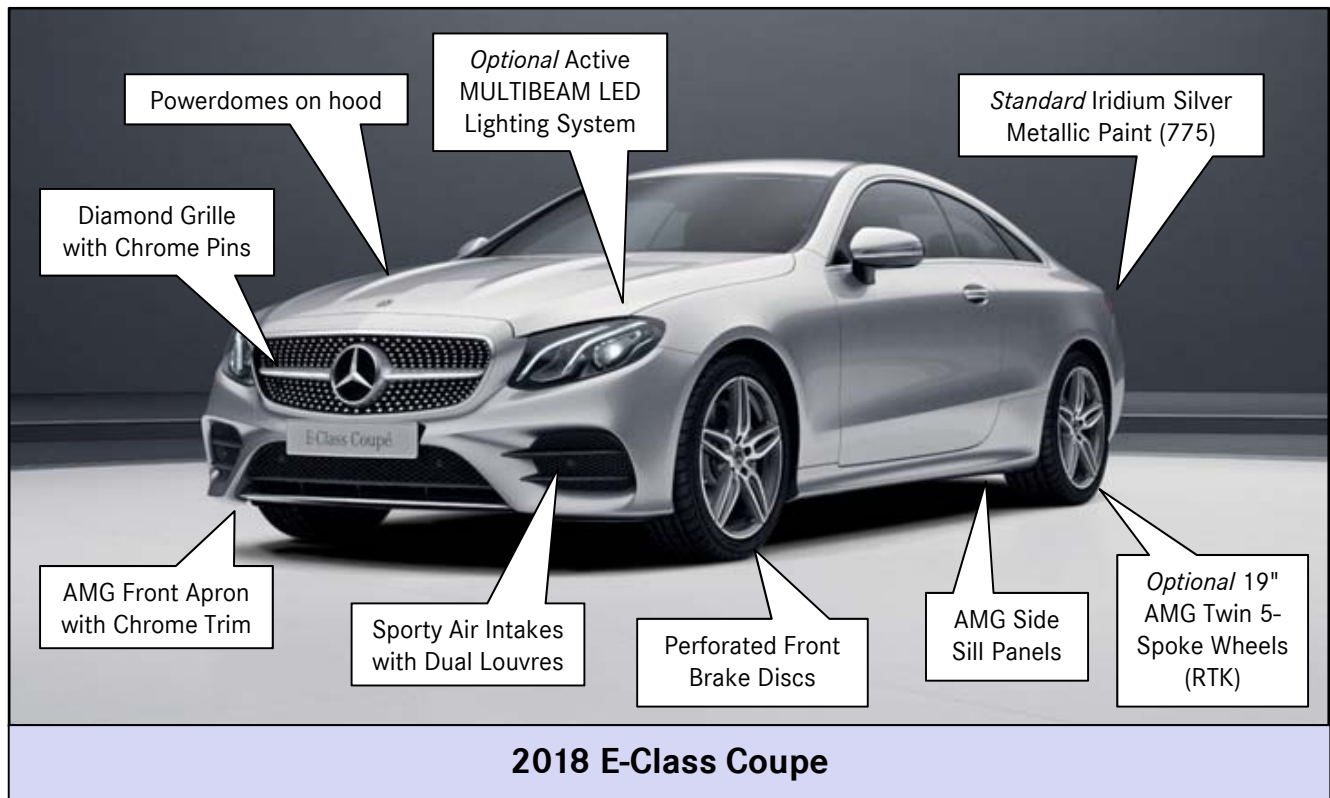
## Model Overview



Model	Engine	Power	Torque	Production	Launch
E 400 4MATIC (238.366)	3.0L Biturbo V6-Cylinder	329 hp from 5,250-6,000 rpm	354 ft/lb from 1,600-4,000 rpm	March 2017	June 2017



# Exterior Images Front



# Exterior Images Rear



**2018 E-Class Coupe**



**2017 E-Class Coupe**



# Interior Images Driver



2018 E-Class Coupe



2017 E-Class Coupe

## Interior Images Passenger



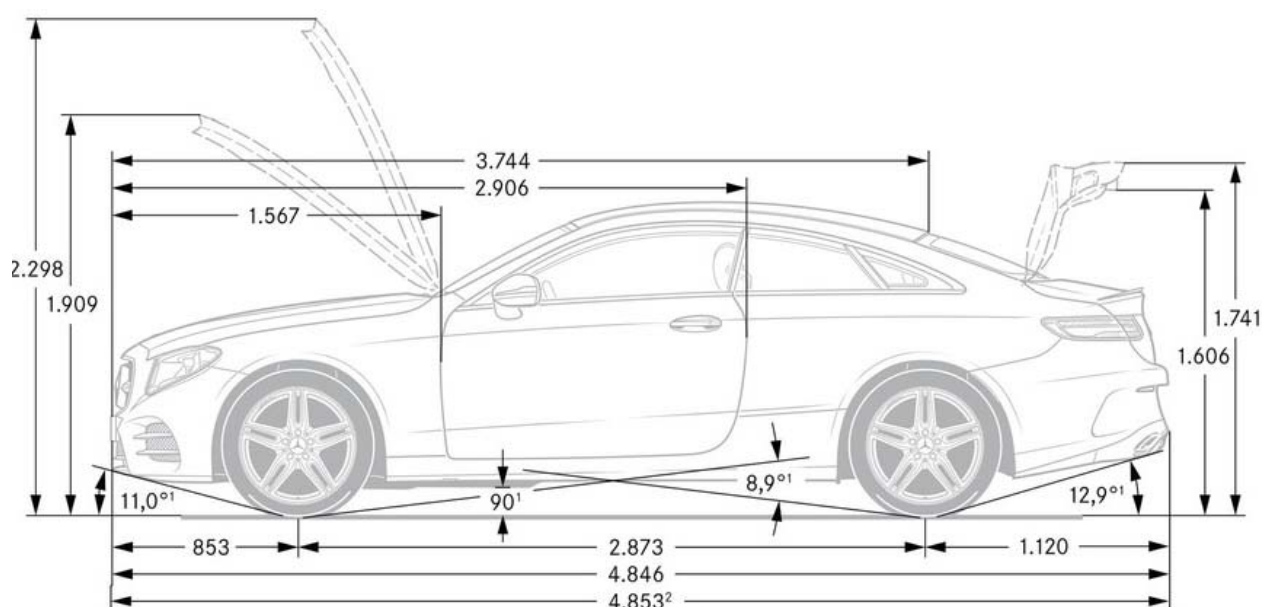
**2018 E-Class Coupe**



**2017 E-Class Coupe**

## MY18 Versus MY17

	2018 E 400 4MATIC	2017 E 400 4MATIC	Difference
Length (mm)	4826 ✓	4703	+123
Width (mm)	1860 ✓	1786	+74
Height (mm)	1430 ✓	1398	+32
Wheelbase (mm)	2873 ✓	2760	+113
Front Track (mm)	1607 ✓	1538	+69
Rear Track (mm)	1613 ✓	1544	+69
Curb Weight (kg)	N/A	1794	N/A
Turning Circle (m)	11.44	11.15	+0.29
Cargo Volume (L)	425	450	-25
Front Headroom (mm)	1039 ✓	1037	+2
Rear Headroom (mm)	925 ✓	910	+15
Shoulder Room (front)	1424 ✓	1374	+50
Shoulder Room (rear)	1277 ✓	1243	+34
Front Leg Room (mm)	1062	1068	-6
Rear Leg Room (mm)	N/A	838	N/A





# Standard Equipment Highlights

## E 400 4MATIC

### Mechanical

- 3.0L Biturbo V6-Cylinder Engine
- 9G-TRONIC Automatic Transmission
- ECO Start/Stop Function
- Transmission Coasting Function
- 4MATIC All-Wheel Drive
- DYNAMIC SELECT
- AGILITY CONTROL w/ Dynamic Cornering Assist



### Exterior

- High Performance LED Lighting System
- AMG Exterior Styling
- Heated/Power Folding Exterior Mirrors
- AMG 18" 5-Spoke Wheels (ROR)



### Interior

- AMG Interior Styling
- ARTICO Leather Dashboard
- Leather Upholstery
- Heated Power Adjustable Front Seats w/ Memory
- Nappa Leather Sport Steering Wheel
- KEYLESS START
- Panoramic Sunroof
- COMAND Online Navigation w/ Touchpad
- Smartphone Integration  
(Apple CarPlay and Google Android Auto)
- SiriusXM Satellite Radio
- MAGIC VISION CONTROL
- Ambient Lighting



### Safety

- Rear View Camera
- Blind Spot Assist
- Parking Pilot with Parking Assist PARKTRONIC
- PRE-SAFE
- Active Brake Assist
- Automatic Headlamp Activation
- Rain Sensing Windshield Wipers
- ADAPTIVE BRAKE
- Crosswind Assist
- ATTENTION ASSIST



# Optional Equipment

## E 400 4MATIC

### Premium Package (MPP)

- 12.3" Instrument Cluster Display
- Burmester Surround Sound System  
(590W, 13 Speakers)
- Hands-Free Access
- EASY-PACK Power Trunk Closer
- KEYLESS-GO
- Enhanced Heated Front Seats
- Heated Front Armrests
- Warmth Comfort Package
- Illuminated Door Sill Panels

### Sport Package (MSP)

- Multicontour Front Seats with Massage
- DYNAMIC BODY CONTROL
- 19" AMG 5-Twin Spoke Wheels (RTK)

### Technology Package (MTP)

- Head-Up Display
- 360 Camera
- Active MULTIBEAM LED Lighting System
- Adaptive Highbeam Assist (AHA)

### Intelligent Drive Package (IDP)

- Advanced Driving Assistance Package  
(Active Blind Spot Assist, Active Lane Keeping Assist, PRE-SAFE PLUS)
- DRIVE PILOT
- Distance Pilot DISTRONIC with Steering Pilot
- Traffic Sign Assist

### Standalone Options

- Climate Comfort Seats
- Rear Window Sunshade
- Burmester 3D High-End Surround Sound System  
(1450W, 23 Speakers)
- Heated Rear Seats
- Wireless Phone Charging
- AIR BODY CONTROL



# Equipment Detail

## Redesigned Vehicle Key

Standard



New vehicle key design:

- Electronic key used to lock and unlock vehicle
- Electronic key does not have an ignition key function due to KEYLESS-GO being standard equipment

# Paints *(For colour reference only. European rims shown.)*

## Solid Paints *Standard*



**Black (040)**



**Polar White (149)**

## Metallic Paints *Standard*



**Obsidian Black (197)**



**Iridium Silver (775)**



**Aragonite Silver (296)**



**Selenite Grey (992)**



**Canvansite Blue (890)**



**Emerald Green (989)**



**Diamond Silver (988)**



# Paints Cont. *(For colour reference only. European rims shown.)*

## designo Paints *Optional*



***designo* Diamond White Metallic (799)**



***designo* Hyacinth Red Metallic (996)**

# Interior Upholstery

Leather   *Standard*



**Black with Vertical Stitching (201)**



**Black with Horizontal Stitching (211)**



**Saddle Brown with Black (204)**



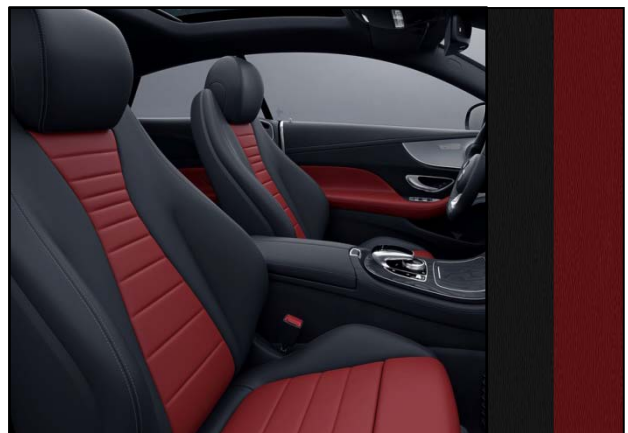
Sport Steering  
Wheel replaced by  
Non-Sport Version

**Macchiato Beige with Espresso Brown (205)**



Sport Steering  
Wheel replaced by  
Non-Sport Version

**Macchiato Beige with Yacht Blue (215)**



**Classic Red with Black (297)**

# Interior Upholstery Cont.

Nappa Leather *Optional*



**Black with Vertical Stitching (801)**



**Black with Horizontal Stitching (811)**



**Macchiato Beige with Espresso Brown (805)**



**Macchiato Beige with Yacht Blue (815)**



**Classic Red with Black (897)**



**Deep White with Black (895)**



# Interior Upholstery Cont.

designo Nappa Leather *Optional*



*designo* Black and Titanium Grey (951)



*designo* Macchiato Beige and Red (955)



# Trims

Trims    *Standard*



Dark Ash Wood Open-Pore (736)



Light Brown Elm Wood Open-Pore (H05)



Brown Ash Wood (H06)

# Trims Cont.

Trims   *Standard*



Light Brown Wood (H01)



Aluminum (H40)

# Trims Cont.

Trims *Optional*



**Metal Weave (H64)**



***designo* Piano Black Flowing Lines (H16)**



***designo* Mongolia Brown Flowing Lines (H26)**



# Wheels

Standard Wheel *Standard*



Front: 245/45  
Rear: 245/45  
All-Season  
Run-Flat Tires

18" AMG 5-Spoke Wheels (RQR)

Sport Package Wheel *Optional*



Only with MSP

Front: 245/40  
Rear: 245/40  
All-Season  
Run-Flat Tires

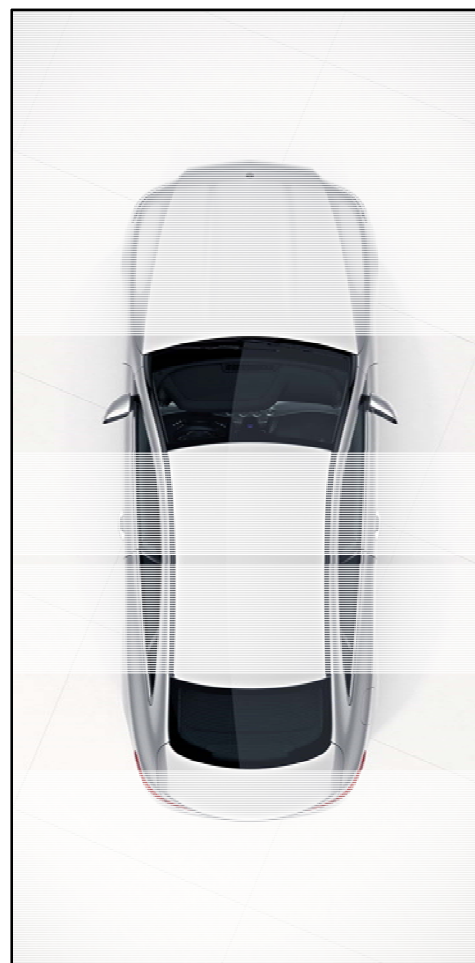
19" AMG Twin-5-Spoke Wheels (RTK)



# Technical Data

## Baumuster 238.366

DIMENSIONS		E 400 4MATIC Coupe
Length (mm)		4,826
Width - Excluding Mirrors (mm)		1,860
Width - Including Mirrors (mm)		2,055
Height (mm)		1,430
Wheelbase (mm)		2,873
Turning Circle (m)		11.44
Track Width - Front (mm)		425
Track Width - Rear (mm)		66
Luggage Capacity (L)		2,873
Fuel Capacity / Reserve (L)		11.44
WEIGHT		
Curb Weight (kg)		TBD
Weight Distribution - Front (%)		TBD
Weight Distribution - Rear (%)		TBD
ENGINE		
Engine Type		24V Biturbo V6
Displacement (cm <sup>3</sup> )		2,996
Bore (mm)		88.00
Stroke (mm)		82.10
Horsepower (SAE @ RPM)		329 @ 5,250 - 6,000
Torque (lb-ft @ RPM)		354 @ 1,600 - 4,000
Compression Ratio		10.5:1
Fuel Type		Premium Unleaded
DRIVETRAIN		
Drive Configuration		4MATIC All-Wheel Drive
Transmission Type		9G-TRONIC
Gear Ratios		TBD
Reverse		TBD
Final Drive Ratio		TBD
BODY/SUSPENSION		
Steering Type		Rack & Pinion
Braking System		ABS with Brake Assist
Front Brake Type / Diameter (mm)		Perforated Disc / 360
Rear Brake Type / Diameter (mm)		Disc / 360
Brake Disc Ventilation		Front & Rear
Front Suspension		Independent, Multi-Link
Rear Suspension		Independent, Multi-Link
Drag Coefficient		0.25
PERFORMANCE		
Top Speed (Electronically Limited - km/h)		210
Acceleration - 0-100 km/h (Seconds)		5.3



# Unique Selling Points

## Mercedes-Benz E-Class Coupe

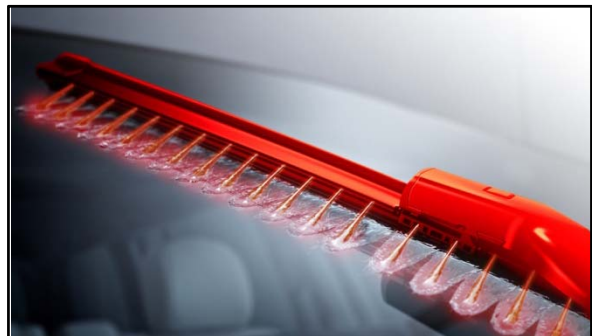


### Technological Advances

The technologies found in the E-Class Coupe define modern day luxury. Advanced driving aids assist with everyday maneuvers. Safety technologies mitigate the risks of daily driving as well as provide protection before, during and after a collision.

### Form and Function

Emotional, distinctive, and purposeful styling is used. The car is larger in almost every dimension than it's predecessor, and passengers benefit the most. However, the vehicle retains its agile and athletic driving dynamics.




---

*"The luxury-two-door-coupe segment has been stagnant for many years, but with the new E-class, it gains a fresh infusion. Quite different in character from the C-class coupe and positioned well above the Audi A5 and the BMW 4-series, it almost approaches the level of the BMW 6-series and the Lexus LC—it's larger inside than both but falls short of their available V-8 engines."* – **Car and Driver**

<http://www.caranddriver.com/reviews/2018-mercedes-benz-e-class-coupe-first-ride-review>

*"All of the luxurious features you'd expect to find in a German executive coupe—soft leather, semi-autonomous driving, a bunch of LED lighting—are present, as is the same rear styling found on the smaller C-Class Coupe and bigger S-Class Coupe."* – **Road & Track**

<http://www.roadandtrack.com/new-cars/news/a31919/2018-mercedes-benz-e-class-coupe-photos-info/>

*"While the platform should be lighter, the car is considerably bigger... Of course, that extra size benefits passengers. Mercedes says it results in more rear legroom, headroom, and shoulder room, and more front shoulder room for this four-passenger grand tourer."* – **Motor Authority**

[http://www.motorauthority.com/news/1107774\\_2018-mercedes-benz-e-class-coupe-adds-style-to-mid-size-luxury](http://www.motorauthority.com/news/1107774_2018-mercedes-benz-e-class-coupe-adds-style-to-mid-size-luxury)